

Beautiful Views of the mighty Darling River

Price : REDUCED TO \$535,000

3 🏠 1 🚗 2 🚗

Schute Bell
Badgery Lumby



PRICE REDUCED

Would you like to wake up every morning looking straight down to the mighty Darling River? Well this property is for you. This property not only has magnificent views of the Darling River and 360 degree views of the majestic outback this property has so much to offer.

The house yard has been divided into 6 separate yards consisting of a house yard, 4 day yards for horses and one wooden fenced horse arena. In the drive way area of the yard block contains a large concreted shed with power and connected to this is a chicken coop area, dog yard and also an undercover stable area. There are also 4 other stables a short distance away from the shed.

The house yard consists of a double storey 3 bedroom house, 2 x 10,000 litre tanks which service the house and yard blocks, a 5,000 litre rain water tank which is plumbed to the house, and also a 2 car carport conveniently located next to this yard.

The 3 bedroom house has a lovely open planned living area, with a beautiful contemporary style kitchen offering plenty of storage space, a large 5 gas burner stove and a large Island bench allowing for extra cooking space with a breakfast bar area as well. This area flows nicely into the large carpeted lounge room where you can sit and view the Darling River.

The bathroom has recently been tastefully renovated with beautiful White tiles on the wall and large black floor tiles. The bathroom offers a shower, toilet, and a lovely white vanity with mirror.

There are 3 good sized bedrooms all with air-conditioning, two of the bedrooms are found upstairs and are carpeted and both have built-ins. The main bedroom offers water views whilst lying in bed, waking up every day looking out onto the Darling River is definitely something you will never get tired of. The third bedroom is found down stairs, offering a good getaway for your kids. The laundry is also located downstairs which offers extra storage space for linen.

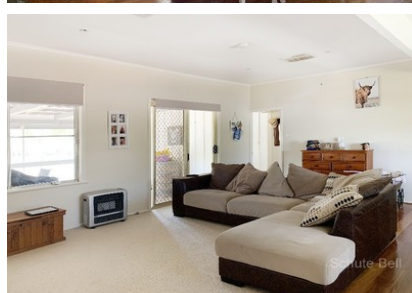
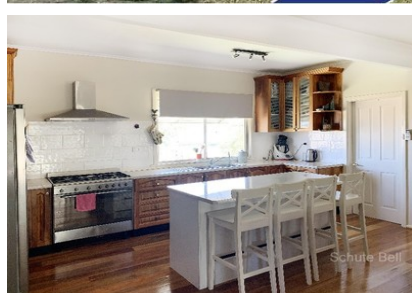
On addition to the many extras the yard block offers, this sale also includes approximately 86 acres of land which has been laser levelled and also has a large water storage area.

If you are looking for a property just minutes out of town, offering solitude and beautiful views then this property is definitely worth an inspection!

This information has been obtained from our vendors and third parties. We make no representations to its accuracy. All computer images, maps and photographs are indicative only. We are merely passing the information on. Interested parties should make their own enquiries.

**Inspections by
appointment only**

**Please contact the agent
for a private inspection**



**Representative
Sharon Dickson
0428 892 185**

Property ID 4801436

**Schute Bell
Property**



**Sydney Office
Ph: (02) 9892 0700
www.schutebell.com.au**