

## Ideal grazing / recreational block

Price : \$915,000

0 🏠 0 🚗 0 🚚



Area & Tenure:  
11,810 Ha (29,182 Acres) WLL

Situation:  
Only 10 km Byrock, 86 km Bourke, 105 km South East of Brewarrina and 125 km North West of Nyngan.

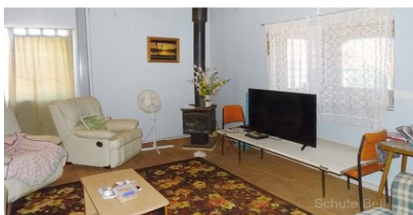
Description:  
Level to slightly undulating red loams. Country timbered with Mulga, Box, Coolabah and edible shrubs. Accessible by vehicle with a series of established tracks.  
6 ground tanks. Recently cleaned. Average annual rainfall of 16' (400mm).  
Fenced into 3 main paddocks with most of the boundary recently cleared and replaced. Some boundary being erected.

Improvements:  
- Colorbond dwelling with Lounge/Kitchen, Bathroom, Bedroom and screened in verandah.  
- Machinery Shed

Features:  
- Highway frontage, very accessible  
- Very good fodder reserves of Mulga and edible scrub  
- Well watered by ground tanks  
- Ideal grazing / recreational block

Inspection by appointment only

This information has been obtained from our vendor(s) and third parties. We make no representations to its accuracy. All computer images, maps and photographs are indicative only. We are merely passing the information on. Interested parties should make their own enquiries.



Representative  
Shane Russell  
0477 400 555

Cameron McIvor Property ID 5007250  
0429 900 118

Schute Bell  
Property



Sydney Office  
Ph: (02) 9892 0700  
www.schutebell.com.au