

# 1001 Stoney Creek Rd Rocky Plain, NSW



Fully furnished, retro rental

Price : LEASED

3 1 0

Approx. 15 mins to Berridale Township and 35 mins to Cooma Township (4 kms dirt road to homestead)

The home consists of 3 bedrooms with built-ins and/or dressers. Eat in kitchen, entry way with built-in cupboard the hallway. A sunroom that could also be a fourth bedroom, big rumpus and enclosed verandah. Large office complete with desks. Bathroom with separate shower to bath and separate toilet off the bathroom. Laundry with washing machine, twin tub wash basin, large freezer.

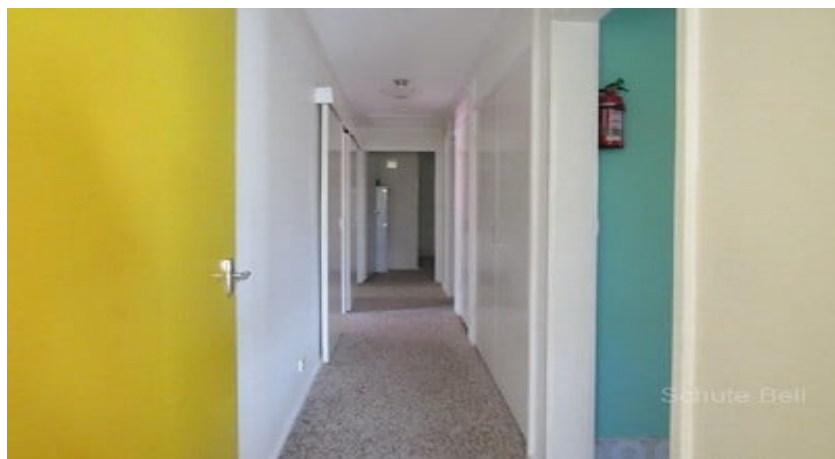
- Electric Heating
- No Dishwasher
- Electric Stove
- Fully furnished
- Fenced Yard

\*\*\*\*\* TENANCY APPLICATION \*\*\*\*\*

<http://www.schutebell.com.au/property-management/>

Inspection by appointment only

This information has been obtained from our vendors and third parties. We make no representations to its accuracy. All computer images, maps and photographs are indicative only. We are merely passing the information on. Interested parties should make their own enquiries.



Representative  
Natalee Reid  
02 6452 4494

Property ID 5348879

Schute Bell  
Property



Sydney Office  
Ph: (02) 9892 0700  
[www.schutebell.com.au](http://www.schutebell.com.au)