

**Long term tenant required**

**Price : LEASED**

**3** **1** **2**



This rental presents a comfortable package for a long term tenant. Featuring 3 bedrooms (no built-ins) separate lounge with split system and dining area. Serviceable kitchen with new stove/oven, and excellent flooring throughout. Located on a large block

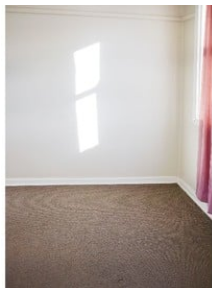
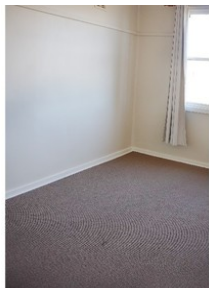
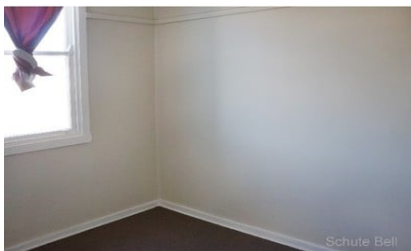
- Split system
- New flooring
- Fresh paint internally 12 months ago
- New oven
- Pets on application

\*\*\*\*\* TENANCY APPLICATION \*\*\*\*\*

<http://www.schutebell.com.au/property-management/>

Inspection by appointment only

This information has been obtained from our vendor(s) and third parties. We make no representations to its accuracy. All computer images, maps and photographs are indicative only. We are merely passing the information on. Interested parties should make their own enquiries.



**Representative**  
Kerry Klintworth

**Shannon Webb**   **Property ID 6983639**

**Schute Bell**  
**Property**



**Sydney Office**  
**Ph: (02) 9892 0700**  
**[www.schutebell.com.au](http://www.schutebell.com.au)**