

## Over 1km of river frontage

Price : SOLD

5 🏠 3 🚗 0 🚚



Area:  
297.9ha (736.13acres) Western land lease

Situation:  
15kms North of Bourke on Bullamunta Road with all weather road access.

Description:  
90% arable grey clay/ red loam, Darling River frontage with water pumped from river for stock and domestic use.  
Property is split into two paddocks, plus a house yard paddock. 1 x 187 ha paddock, 1 x 110 ha paddock. Fencing consists of western fence (6 wire and barb, able to be electric) around the river frontage paddock, and double height goat proof fence (8/90/30 fence and 3 barb on top) around the 110ha paddock. Bourke's average rainfall is 372mm.  
This property is best suited to stocking goats, current owners running 150-200 goats on one paddock

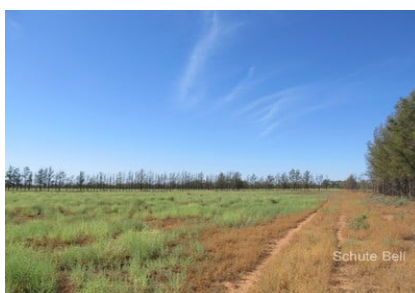
Improvements:  
1 x 2 bedroom cottage with reverse cycle air conditioning, 1 x 3 bedroom home, with two reverse cycle air conditioners, evaporative cooling, and gas stove, 1 x old style school building which consists of a rumpus room and living room, evaporative cooling and wood heater.

- 2 x machinery sheds
- 1 x workshop with cement ramps and wash bay
- 1 x Hay shed
- One dam and 3 stock troughs.

- Features:
- Over 1km of river frontage with boat ramp
  - 2 Large machinery sheds
  - Workshop with cement ramps and wash bay
  - Goat proof fencing
  - Automatic sprinklers for house yard.

Inspection by appointment only.

This information has been obtained from our vendor(s) and third parties. We make no representations to its accuracy. All computer images, maps and photographs are indicative only. We are merely passing the information on. Interested parties should make their own enquiries.



Representative

Property ID 4195386

**Schute Bell**  
Property



Sydney Office  
Ph: (02) 9892 0700  
[www.schutebell.com.au](http://www.schutebell.com.au)