

Invest or reside

Price : SOLD

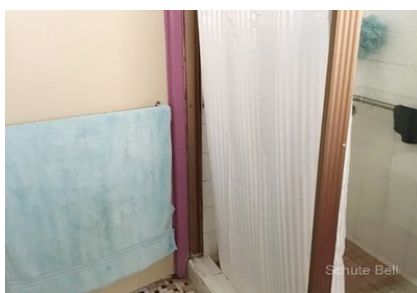
4 1 2



Four Bedroom clad and iron roof home situated on the edge of town.

- Four bedrooms, 1 with robe and 3 with ceiling fans
- The main having a sitting area/office with external access
- Lounge room
- Kitchen with dining area
- Bathroom with, shower and bath
- Ducted evaporative air conditioning
- Entertainment area along the back of the home with cement flooring
- Front tiled porch
- 5.5k/w solar power
- Security cameras
- Lock up garage with power and cement flooring
- Skillion off the garage and two garden sheds
- Fully enclosed yard with side access

This information has been obtained from our vendors and third parties. We make no representations to its accuracy. All computer images, maps and photographs are indicative only. We are merely passing the information on. Interested parties should make their own enquiries.



Representative  
Kerry Klintworth

Property ID 6320259

**Schute Bell**  
Property



Sydney Office  
Ph: (02) 9892 0700  
[www.schutebell.com.au](http://www.schutebell.com.au)