

Town living with country aspect

Price : SOLD

4 🏠 2 🚗 4 🚗

Schute Bell
Badgerly Lumby



This four bedroom home is located minutes from town offering loads of peace and tranquility set up 3.61 Acres (1.46 Hectares).

This home has plenty to offer:

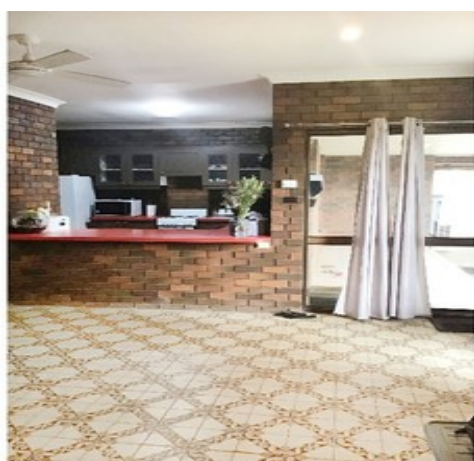
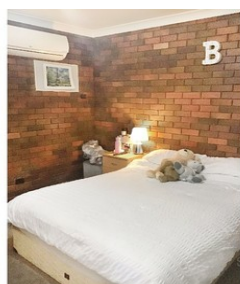
Four bedrooms - main bedroom with ensuite and split system, all bedrooms having ceiling fans. Bedroom two and three have built in cupboards. Formal dining and lounge located at the front of the home with two glass sliding doors that lead out onto an outdoor sitting area. Open plan kitchen, dining and family room, main living area with split system, kitchen and dining room with tiled flooring. Kitchen has a walk-in pantry, breakfast bar, free standing oven, cook top and dishwasher. Walk in linen/storage cupboard, three-way bathroom. Wood fire located in the middle of the home to keep everyone warm in the winter months. Outside you will find an in-ground pool and BBQ area great for the summer months. Four bay carport, establish garden beds, push in sprinklers. 28 solar panels making 7kw system, drive through entry and exit with grids. Fenced into separate paddocks and the house yard being fully fenced. Bore and two water tanks and scheme water. Security cameras.

Features

- 3.61 Acres or 1.464 HA
- Double brick 4 bedroom, 2 bathroom home
- 2 Formal Living areas
- 4 bay carport
- In ground pool
- Bore & an estate water scheme
- 4 bay carport

Inspection by appointment only

This information has been obtained from our vendor(s) and third parties. We make no representations to its accuracy. All computer images, maps and photographs are indicative only. We are merely passing the information on. Interested parties should make their own enquiries.



Representative
Jason Hartin
0429 894 334

Kerry Klintworth Property ID 6345369
0400 231 986

Schute Bell
Property



Sydney Office
Ph: (02) 9892 0700
www.schutebell.com.au