

23-25 Cassowary Street Longreach, QLD

First time on the market since 1915

Price : SOLD

3 1 2

Set on a double block this property has a lot of potential. Originally built in 1915 with pressed metal ceilings in living areas. 3 bedrooms plus office and verandah/sleep out. Currently in a lovingly maintained retro style and ready for renovation. Functional tiny kitchen includes a new fridge and stove. Bathroom with bath and a separate laundry room with washing machine. External solid bbq structure.

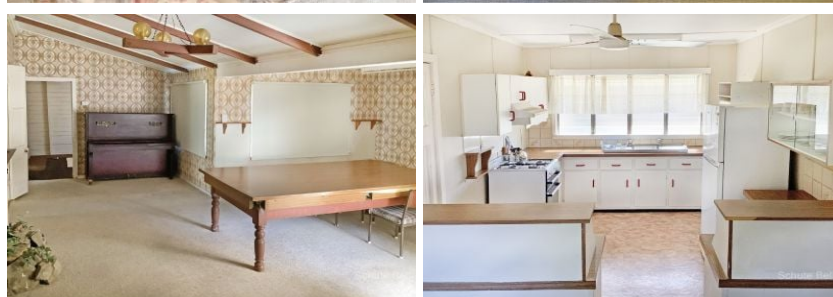
Set on a double block with access front and rear. Ample room to divide, extend or build (STCA). There is a garden shed and wrap around old style shed.

Some furniture is included a list is available on request.

- Double block (2428 sqm)
- Front and rear access
- Ideal for renovation
- Town and tank water

Inspection by appointment only.

This information has been obtained from our vendor(s) and third parties. We make no representations to its accuracy. All computer images, maps and photographs are indicative only. We are merely passing the information on. Interested parties should make their own enquiries.



Representative
Paul Grams

Property ID 7013007

**Schute Bell
Property**



Sydney Office
Ph: (02) 9892 0700
www.schutebell.com.au