

## Unique commercial offering

Price : \$370,000

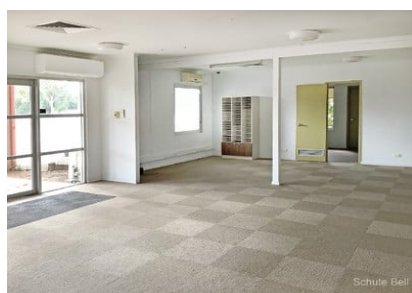
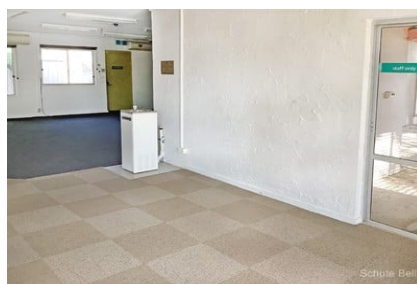
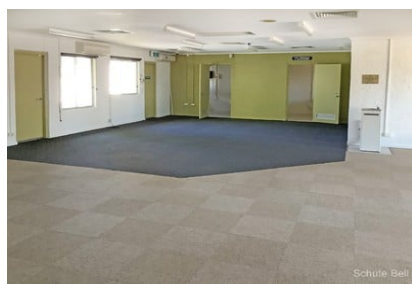
0 0 0



Within 2 blocks of the CBD and next door to Longreach Motor Inn. Close to the railway, parks and Our Lady's School. Well-kept building with outdoor shaded courtyard the building contains open office plan with a total floor space of approx. 181sqm. Set on a 599 sqm block. The office could be opened further or converted into more office spaces to adapt to a new business. There is also wheelchair access via front ramp. Indoor and external toilet facilities. Main kitchen area as well as smaller second kitchen space and storage. Well shaded with established trees and small garden area. Previously used as a Centerlink building, Doctors offices and a camping store. If your business is expanding and you wish to relocate or stop paying rent or even looking to purchase into a commercial property as an investment this property is well worth a look.

Inspection by appointment only.

This information has been obtained from our vendors and third parties. We make no representations to its accuracy. All computer images, maps and photographs are indicative only. We are merely passing the information on. Interested parties should make their own enquiries.



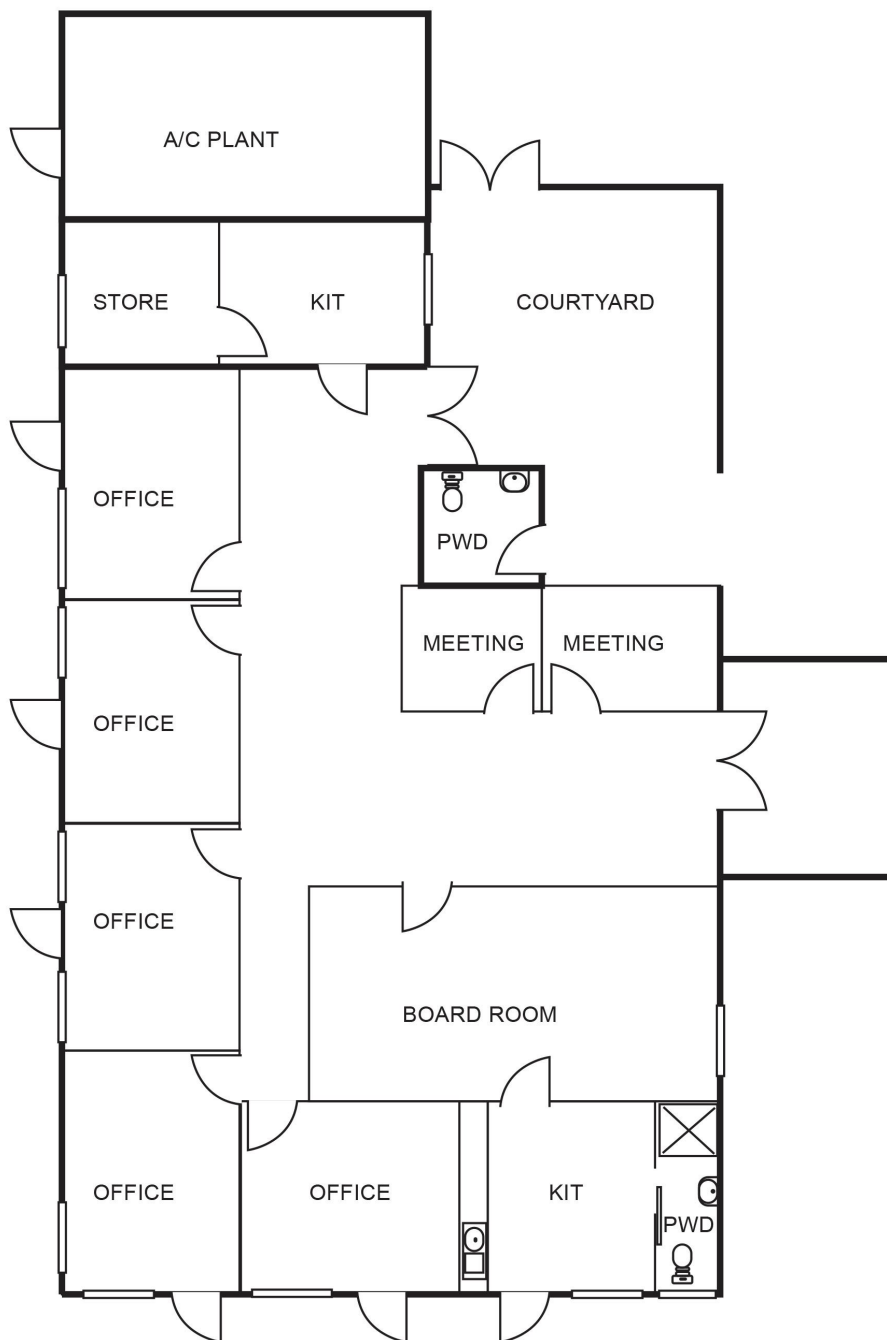
Representative  
Paul Grams

Property ID 7160232

**Schute Bell**  
Property



Sydney Office  
Ph: (02) 9892 0700  
[www.schutebell.com.au](http://www.schutebell.com.au)



This information has been obtained from our vendor(s) and third parties. We make no representations to its accuracy. All computer images, maps and photographs are indicative only. We are merely passing the information on. Interested parties should make their own enquiries.

Schute Bell Property