

Make this one your own

Price : \$152,500

3 **1** **2**



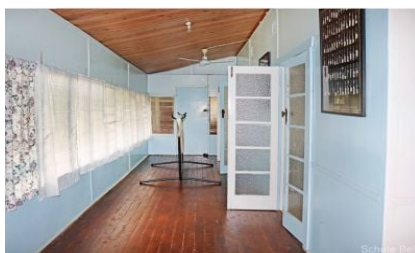
Located within walking distance to the clubs and pubs, the main street, TAFE, a local supermarket and the beautiful central park. This original three-bedroom home has some wonderful features from the past. Including wooden flooring, verandahs on three sides, French doors, eat in kitchen and 1012m block with back lane access.

This home would suit the investor as it has a long-term tenant in place but would also be a great property to renovate and make into your dream home.

- Polished floors
- French doors
- Three bedrooms
- 1012sqm fully fenced yard with back lane access
- Centrally located
- Estimated rental return of \$250 pw

Inspection by appointment only.

This information has been obtained from our vendors and third parties. We make no representations to its accuracy. All computer images, maps and photographs are indicative only. We are merely passing the information on. Interested parties should make their own enquiries.



Representative
Shane Russell
0477 400 555

Property ID 7260432

Schute Bell
Property



Sydney Office
Ph: (02) 9892 0700
www.schutebell.com.au