

## The Lifestyle Package

Price : **SOLD**

7 3 0

### Situation:

4 kms East from Narromine on the Mitchell Highway.

### Description:

Flat to red alluvial loam soil with established Pistachio trees. Other timbers on the property are Belah and Gum trees.

This property is a part of the 'High Park Water Users Association'.

Plus, a 22,000L River water tank for lawns and gardens.

Average annual rainfall of 533mm (21").

Colourbond fencing at entry of property as well as hinge joint and netting around the boundary and divided fences. Subdivided into three paddocks.

### Structural Improvements:

Four-bedroom brick and tile roof homestead with built-ins in all rooms. Main bedroom with ensuite and a spa bath. Other features include two living areas, wood heating, evaporate cooling throughout, kitchen with pantry, breakfast bar and plenty of storage. Kitchen area flowing onto the dining area.

This property has a second dwelling consisting of a two-storey cottage with lounge, dining, kitchen and bedroom on the lower level and two more bedrooms located upstairs.

Two work sheds one with cement floor, rural power and 26 panels for solar power with converter, aviary, chicken yard and vegetable garden area.

### Features:

- 4-bedroom homestead
- 3-bedroom cottage
- 27.3 Acres (10.05 Ha)
- 4 km East of Narromine
- A part of the High Park Water Users Association
- Established Pistachio Trees

Inspection by appointment only

This information has been obtained from our vendor(s) and third parties. We make no representations to its accuracy. All computer images, maps and photographs are indicative only. We are merely passing the information on. Interested parties should make their own enquiries.

**Representative**  
Jason Hartin

**Property ID 7445630**

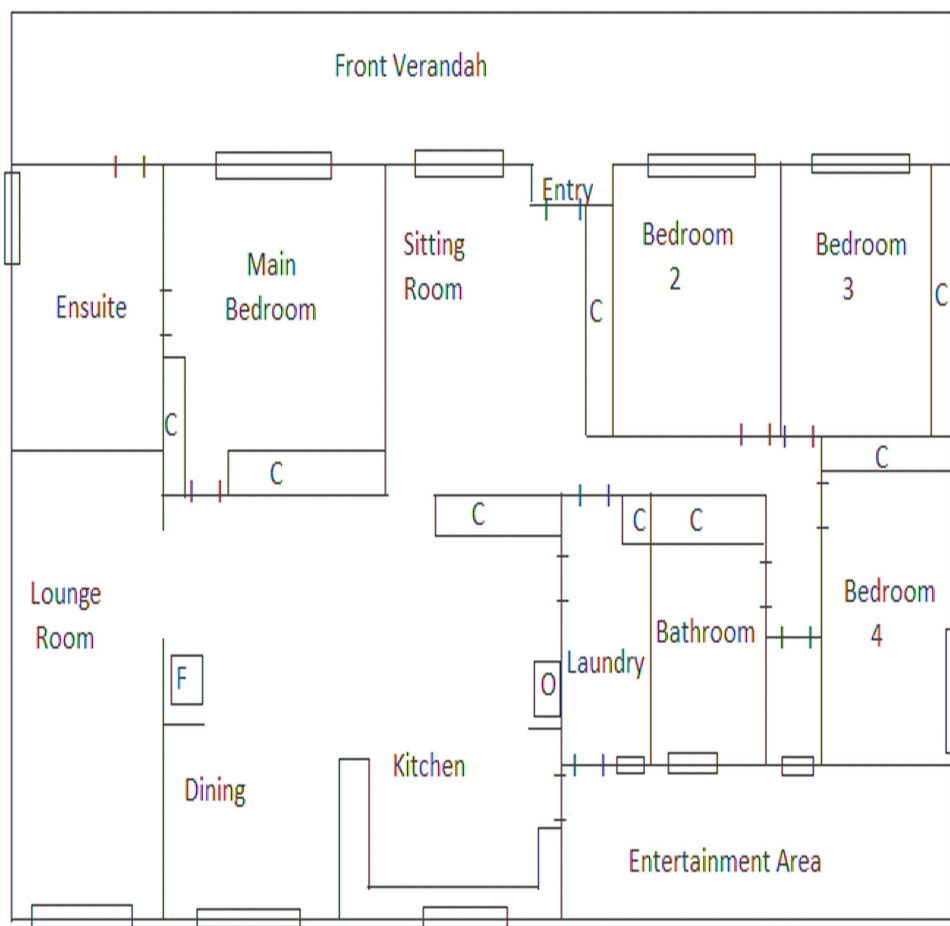
**Schute Bell**  
Property




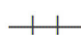


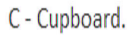
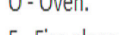
**Sydney Office**  
Ph: (02) 9892 0700  
[www.schutebell.com.au](http://www.schutebell.com.au)



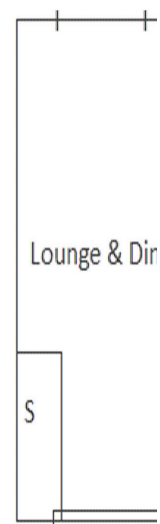
## Main Homestead



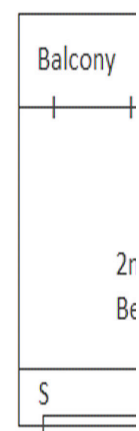
**THESE FLOOR PLANS ARE  
NOT SET TO SCALE.**

-  - Window
-  - Oven
-  - Fire place
-  - Doorways
-  - Cupboard.
-  - S - Stairway.

## 2nd Dwelling



## 1st Level



This information has been obtained from our vendor(s) and third parties. We make no representations to its accuracy. All computer images, maps and photographs are indicative only. We are merely passing the information on. Interested parties should make their own enquiries.

**Schute Bell  
Property**

