

6 Little Curlew Court Longreach, QLD



Large block at the end of Cul-de-sac, secluded in the quiet end of town

Price : Contact agent for details

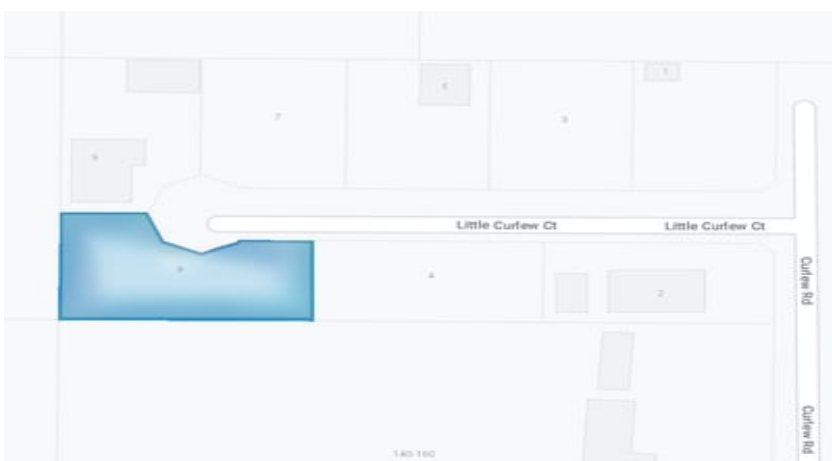
0 🏠 0 🚗 0 🚚



This is the biggest parcel of land in the Little Curlew Court Subdivision, measuring 2415 sqm. Little Curlew Court was subdivided in 2013 and contains underground Power, Town Water, Telstra at front boundary and uniquely having sewage connected. Whereas other blocks in area aren't complimented with these facilities. Situated on higher ground for the Longreach township. Highly sought after and very rare parcel of land. Great views of the Hall of Fame and Qantas Museum on approaching street.

Inspection by appointment only.

This information has been obtained from our vendor(s) and third parties. We make no representations to its accuracy. All computer images, maps and photographs are indicative only. We are merely passing the information on. Interested parties should make their own enquiries.



Representative
Paul Grams

Property ID 7506722

Schute Bell
Property



Sydney Office
Ph: (02) 9892 0700
www.schutebell.com.au