

## Charming Queenslander with Unbeatable Location

Price : \$260,000

3 1 1



Offering a unique traditional Queenslander style home. The home boasts a lounge room, an inviting eat-in kitchen, a formal dining area, and bathroom, all situated upstairs.

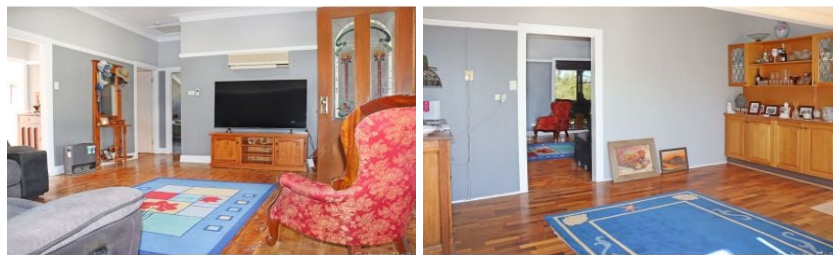
The ground floor contains a spacious area that is entirely enclosed and lockable and could lend itself to a number of uses. Nestled on a 1012m fully fenced block, this residence boasts a single garage and lockable shed. Back lane access provides ease of access and surrounded by established lawns and gardens.

Perfectly positioned in town, this home enjoys a coveted location just opposite the swimming pool and sporting fields. Both the high school and primary school are just a leisurely stroll away, making it an ideal home for families. The convenience of the hospital across the street and the local supermarket within moments truly highlights the unbeatable location of this property.

- Unique Queenslander style house
- Three bedrooms
- Upstairs lounge room, kitchen, formal dining area, and bathroom
- Fully enclosed, lockable ground floor with various potential uses
- 1012m fully fenced block
- Single garage and lockable shed in the backyard
- Convenient back lane access
- Prime location close to the pool, sporting fields, schools, hospital and supermarket
- Estimated rental return of \$350 pw

Inspection by appointment only.

This information has been obtained from our vendors and third parties. We make no representations to its accuracy. All computer images, maps and photographs are indicative only. We are merely passing the information on. Interested parties should make their own enquiries.



**Representative**  
**Shane Russell**  
**0477 400 555**

**Property ID 7664440**

**Schute Bell**  
**Property**



**Sydney Office**  
**Ph: (02) 9892 0700**  
**www.schutebell.com.au**