

Looking to invest!!

Price : \$798,000

8 🏠 4 🚗 0 🚗

Units 1-4 Meryula Street Narromine are set on the Southern side of town.

If you are looking to start your rental portfolio or just wanting to add to your investment portfolio than these units may please.

The units are double brick and decramastic roofing.

Four units all comprising of two bedrooms.

Kitchen and dining area with split system air-conditioning

Separate Lounge room

Bathroom/Laundry combined.

Each unit with its own courtyard.

Fully enclose yard.

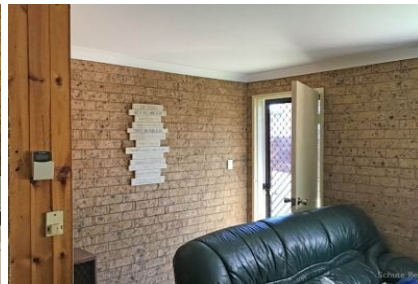
Off street at the front of the units.

Rear lane access to the back yard with a block measuring 919.7sqm

Estimated rental return \$810 pw

Inspection by appointment only.

This information has been obtained from our vendor(s) and third parties. We make no representations to its accuracy. All computer images, maps and photographs are indicative only. We are merely passing the information on. Interested parties should make their own enquiries.



Representative
Kerry Klintworth

Property ID 7982402

Schute Bell
Property



Sydney Office
Ph: (02) 9892 0700
www.schutebell.com.au