

LIVESTOCK LIST

Schute Bell
Livestock



Head Office
PO Box 1036,
Merrylands NSW 2160

Yennora Wool Centre,
Gate 2 Dennistoun Av,
Guildford NSW 2161

Phone: (02) 9892 0700

www.schutebell.com.au



12th March 2025



Guyra Sheep Sale

Conducted Tuesday weekly until March 2025
Next sale 18th March 2025
Commencing 9am

Armidale Cattle Sale

Conducted fortnightly on Thursdays
Next sale 13th March 2025

Contact

Todd Clark 0428 248 427
Phil Evans 0429 632 523
Graham Andrews 0400 342 227

Braidwood Cattle Sale

Conducted 1st Friday each month
Next sale 4th April 2025

Contact

Anthony Atkinson 0412 777 700

Wagga Wagga Selling Centre

Cattle – Monday weekly commencing 7am
Next sale 17th March 2025

Sheep – Thursday weekly commencing 8am
Next sale 13th March 2025

Contact Robert Worner 0428 672 066

Armidale Weaner sales

NELA Combined Agents Top of the Range Weaner sale

Wednesday 30th April 2025
Wednesday 28th May 2025

For booking and enquiries contact:

Todd Clark 0428 248 427
Phil Evans 0429 632 523
Graham Andrews 0400 342 227

Auctions Plus

Weaner & Yearling sale Friday 14th March 2025

42 very good quality Angus feeder steers.
Ave 350.2kg at assessment
Located Braidwood

Contact: Anthony Atkinson 0412 777 700



<https://auctionsplus.com.au/auctions/cattle/weaner-yearling-sale/42-feeder-steers/assessed/125672-284037>

Auctions Plus

Weaner & Yearling sale Friday 14th March 2025

45 top quality Angus heifers, ideal condition to join or feed

Ave 358kg at assessment
Located Braidwood

Contact: Anthony Atkinson 0412 777 700



<https://auctionsplus.com.au/auctions/cattle/weaner-yearling-sale/45-nsm-yearling-heifers/assessed/125672-284050>

Auction 17-18th March 2025

AuctionsPlus Online Clearing Sale

Kirribilli Clearing Sale A/C – WJ Noonan
12094 Mitchell Highway Nevertire NSW 2826
PROPERTY SOLD

AUCTION OPEN:

Monday the 17th of March 2025 @ 8:00 am.

AUCTION CLOSE:

Tuesday the 18th of March 2025 @ 4:00 pm.

Inspections:

Sunday 16th of March 2025 @ 10am - 12 noon

Collection:

Saturday 22nd of March 2025 @ 10am - 12 noon

Full terms and conditions on AuctionsPlus site



<https://auctionsplus.com.au/auctions/machinery/hartin-schute-bell-kirribilli-clearing-sale/125619>

Auction 13th March 2025 11am

AUCTION "Avalon", Tullamore

- 1,810 Acres (732.5 Ha).
- Located 20 kms from Tullamore and 36 kms from Tottenham.
- 5 Bedroom home.
- Reliable springs.
- 2 Stand shearing shed and steel yards
- Approximately 80% Arable.
- Time to Move & Time to expand.

AUCTION Thursday 13th of March 2025
11 am at 17 Burraway St, Narromine

Hartin Schute Bell Narromine
Jason Hartin 0429 894 334
www.schutebell.com.au/7999164

<https://www.schutebell.com.au/7999164/>

For sale

LUCERNE & GRASS HAY

200 BALES OF Lucerne & Grass hay
8x4x3 approx 600kg
1st and 2nd cut
\$250 per bale plus GST
Located Merrygoen

Contact: Jason Hartin 0429 894 334

Shearing supplies

Available while stocks last



Schute Bell
Badgery Lumby



1 Wyndham St, Inverell NSW
Ph: (02) 6722 1888

Available while stocks last.

Auction 27th March 2025

SAVE THE DATE
27th March 25

Rates in Arrears - Council Auctions

- Approx. 14 lots up for Auction
- Houses, dwellings and vacant blocks
- Located Brewarrina / Goodooga & Angledool

Auction to be held at 11am at the
Council Chambers Brewarrina
More details to come....

Schute Bell
Badgery Lumby

Richelle Codrington
02 6839 2020 or 0427 293 327



Auction 29th March 2025 11am

“Colonsay” Guyong

The Olde Stone School House

Built in 1870, this renovated 3 bedroom home had its beginnings as a schoolhouse for Guyong district.

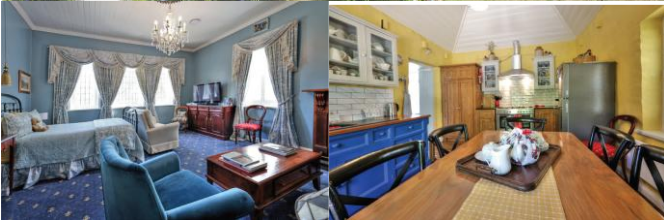
Characterised by its Bluestone build, “Colonsay” sits majestically amongst thoughtfully landscaped gardens on a 2.3 Acre block.

- A home showing wonderful character and presentation
- Classic Bluestone 1870 renovated Mid Victorian build
 - Beautifully landscaped surrounds
- Close to the townships of Millthorpe, Orange and Blayney
 - Complete with period style furnishing

Auction Onsite - Saturday 29th March – 11 am

Open homes - Saturday 1st and 8th March from 2 pm to 3.30pm

Contact: Cameron Mclvor 0429 900 118



<https://www.schutebell.com.au/8255146/>

A place in history

Peters' Ice Cream Factory — Taree, NSW

This factory was an important part of the mid-north coast of NSW for more than 50 years. It was built in 1939 and served the once-booming dairy industry around Taree, originally producing condensed milk for the manufacture of ice cream.

The factory ceased operation in the 1990s, but still holds a significant place in the hearts of local residents, with a “Dairy Factory Reunion” held there in 2016, as part of the National Trust Heritage Festival.

